

Inès's Linear Regression

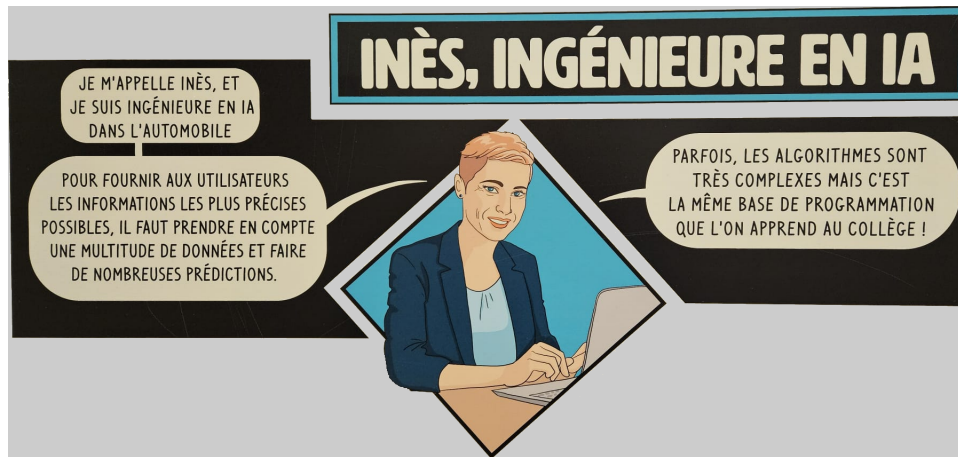
Enigma n°8

19th December 2024

Inès is working on a statistics project in a car company. She needs to perform a linear regression. She has the following four data points in 2D:

- (1, 2)
- (2, 3)
- (3, 5)
- (4, 8)

Can you help her find the slope of the line of best fit for these points?
Give your answer rounded to the nearest 10^{-3} .



Inès' poster, to be found in "diagonale Eiffel".